

SatLink3 Logger Transmitter Quick-Start Guide



1 Assemble Your Equipment

Besides this Quick Start Guide, you should have

- ▶ SL3 itself
- ▶ Screwdriver (comes with SL3)
- ▶ USB cable that comes with SL3
- ▶ Your PC, Android device or Apple device (phone, iPad, etc.)
- ▶ 9-20 VDC battery or power supply
- ▶ RS232 cable (if necessary for PC)



2 LinkComm for Android Phone, Tablet

Using your Android device, download Sutron's LinkComm Software from Google Play.

LinkComm for iPhone, iPad

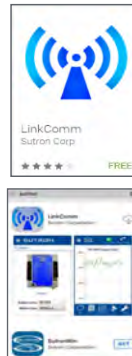
Using your Apple device, download Sutron's LinkComm Software from the APP Store.

LinkComm for PC

Using your PC, download Sutron's LinkComm Software from our web site:

<https://www.sutron.com/linkcomm-beta-software/>

Note: If you are using Windows 7, a driver must be installed prior to the first use and is provided in the start menu. Newer versions of Windows does not require the driver. Note that support for Win XP is not provided.



3 Connecting SL3 to Power

Connect SL3 to a 9-20 VDC battery or power supply.

- ▶ Pin 1 is Ground (Battery -).
- ▶ Pin 2 is 12-20VDC (Battery +)



4 Connecting SL3 to Communication Devices

- ▶ USB cable to PC (OTG)
- ▶ RS232 cable to PC (if necessary)
- ▶ Wi-Fi
Use your device's Wi-Fi (phone, tablet or PC) settings to access point named SutronSL3_XXXX_YYYY (XXXX may be station name)



4 Wi-Fi Settings



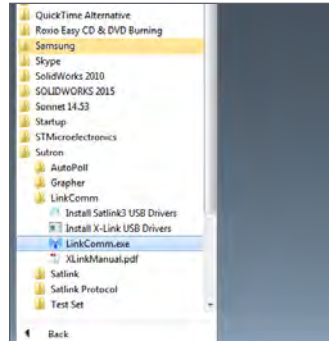
SatLink3 Logger Transmitter Quick-Start Guide



5

Run LinkComm

Choose LinkComm



6

Verify Connection Settings

▶ Be sure to select Your Device

Connect type: USB
 Host:
 IP port: 3001
 Device: 00:1e:c0:2c:2b:8d
 Check setup on connect
 Get recent data on connect

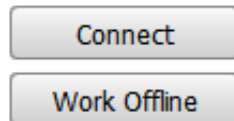
▶ Go back to step 5 if you see this error message

Connection Settings
 Connect type: Station Wi-Fi
 Host:
 User name:
 Password:
 Please connect to Satlink3 Wi-Fi!



7

Press Connect



8

Get More Information

- ▶ Download the **Satlink 3 User Manual** from www.sutron.com/downloads
- ▶ Watch Videos (YouTube)
- ▶ Contact **Customer Service**
Main CS # (703) 406-2800 ext. 5
After 5 pm EST M-F (703) 406-2800 ext. 6

